

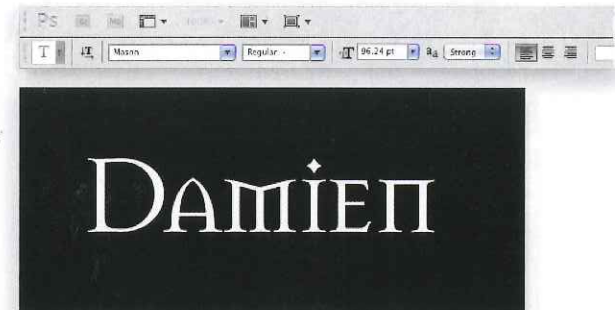
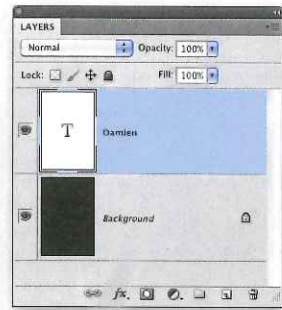
DOWN & DIRTY TRICKS

FELIX NELSON

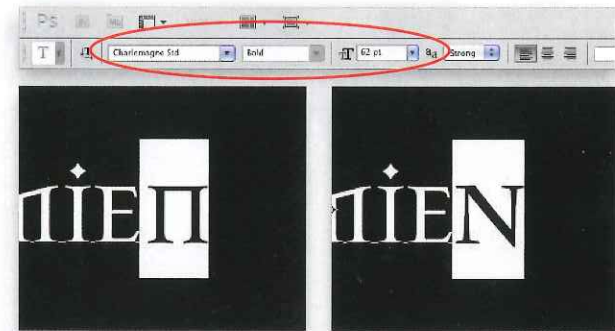
Damien Grey Type Style

In the June 2011 "Down & Dirty Tricks" column, we created a fictitious movie poster in a tutorial called "Creepy Composite." That particular technique focused on combining elements to create a composite but didn't show how we created the muted metal type effect used in the title. Here's how we did it.

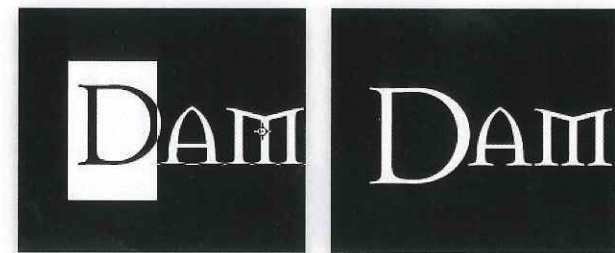
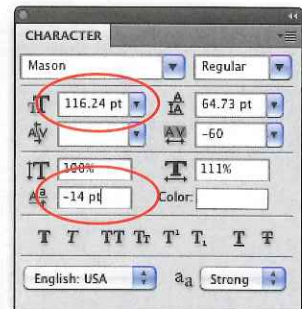
STEP ONE: Create a new 9x6", 72-ppi document. With the Background layer highlighted as the active layer, press D to set the Foreground to black, and press Option-Delete (PC: Alt-Backspace) to fill the Background layer with black. Choose the Type tool (T) from the Toolbox. Go to the Options Bar and choose Mason Regular as the font and 96.24 pt for the Size. Press X to change your Foreground color to white. Click on your document (it will create a new layer), and type in the word "Damien."



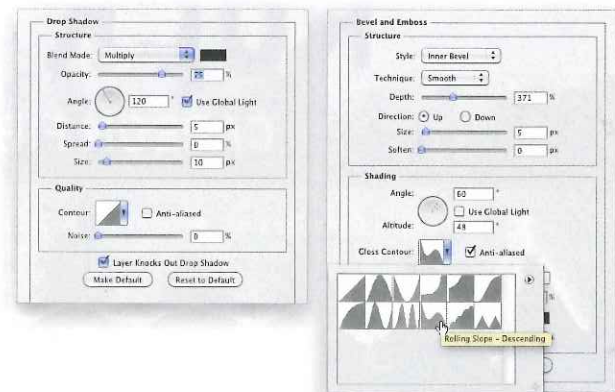
STEP TWO: I don't like how the letter "n" looks in this particular font (Mason Regular), so let's change the font for that letter. Using the Type tool, highlight the "n." Go to the Options Bar, select Charlemagne Std Bold as the font, and enter 62 pt for Size.



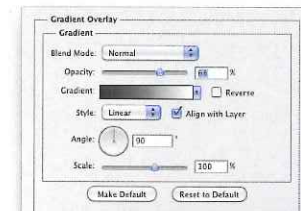
STEP THREE: Select the letter "D." Go to the Character panel (Window>Character), enter 116.24 pt for Size and -14 pt for Baseline Shift. Click the Commit icon (check mark) in the Options Bar.



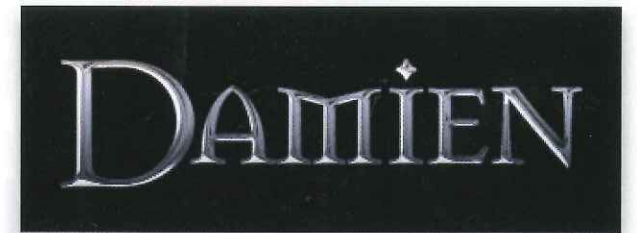
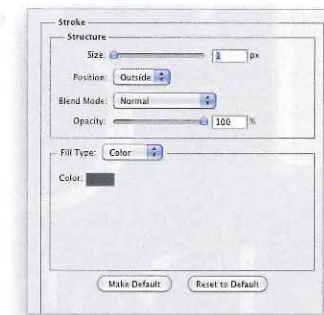
STEP FOUR: Click on the Add a Layer Style icon (fx) at the bottom of the Layers panel and choose Drop Shadow. Enter 10 px for Size, but don't click OK. Click on the words "Bevel and Emboss" in the Styles list on the left side of the Layer Style dialog. Enter 371% for Depth. Uncheck the Use Global Light box. Enter 60° for Angle and 48° for Altitude. Check the Anti-aliased box. Click on the down-facing arrow next to the Gloss Contour thumbnail and choose Rolling Slope - Descending. Don't click OK just yet.



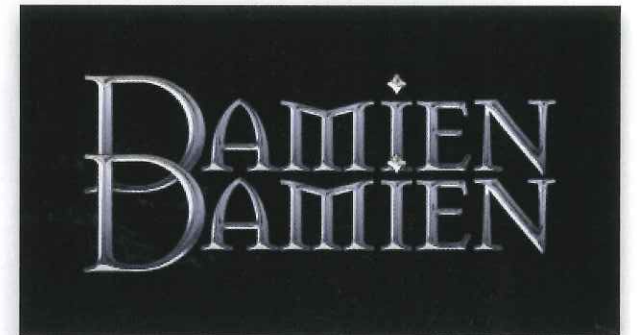
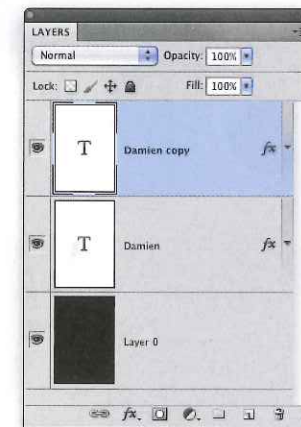
STEP FIVE: Choose Color Overlay from the Styles list. Choose Color as the Blend Mode, click on the red color swatch, choose a light blue color (R:164, G:194, B:214) and click OK (you won't notice any color change until you do the next part of this step). Now, choose Gradient Overlay from the Styles list and enter 68% for Opacity (the text will now have a blue metallic tint). You're almost ready to click OK and apply the layer styles—but hold off for one more step.



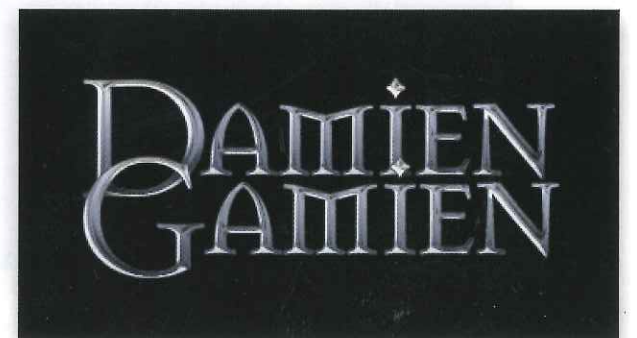
STEP SIX: Finally, choose Stroke from the Styles list. Enter 1 px for Size and click on the black Color swatch on the lower left. Choose a dark blue color (R:61, G:85, B:94) and click OK. Click OK to apply all five layer styles.



STEP SEVEN: Duplicate the Damien type Layer (Damien copy) by dragging it onto the Create a New Layer icon at the bottom of the Layers panel. Use the Move tool (V) to position it slightly below the original Damien type Layer.



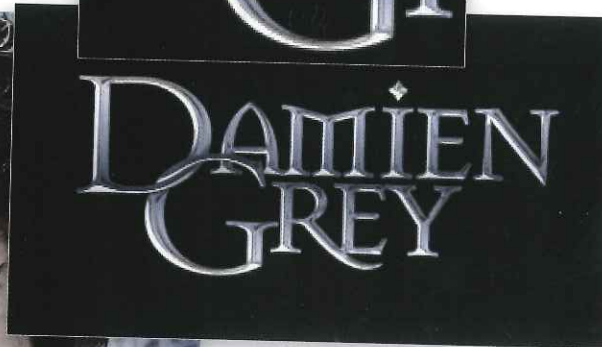
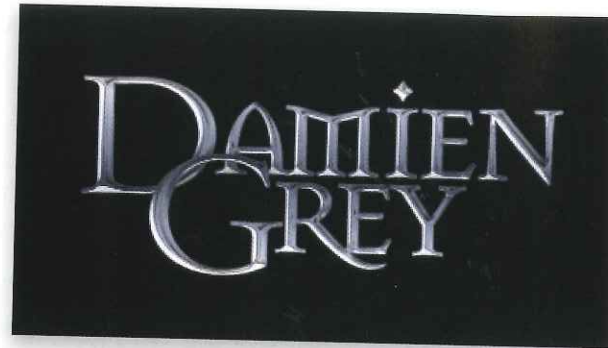
STEP EIGHT: Using the Type tool, select only the letter "D" on the Damien copy layer. Change the letter "D" to the letter "G" (uppercase).



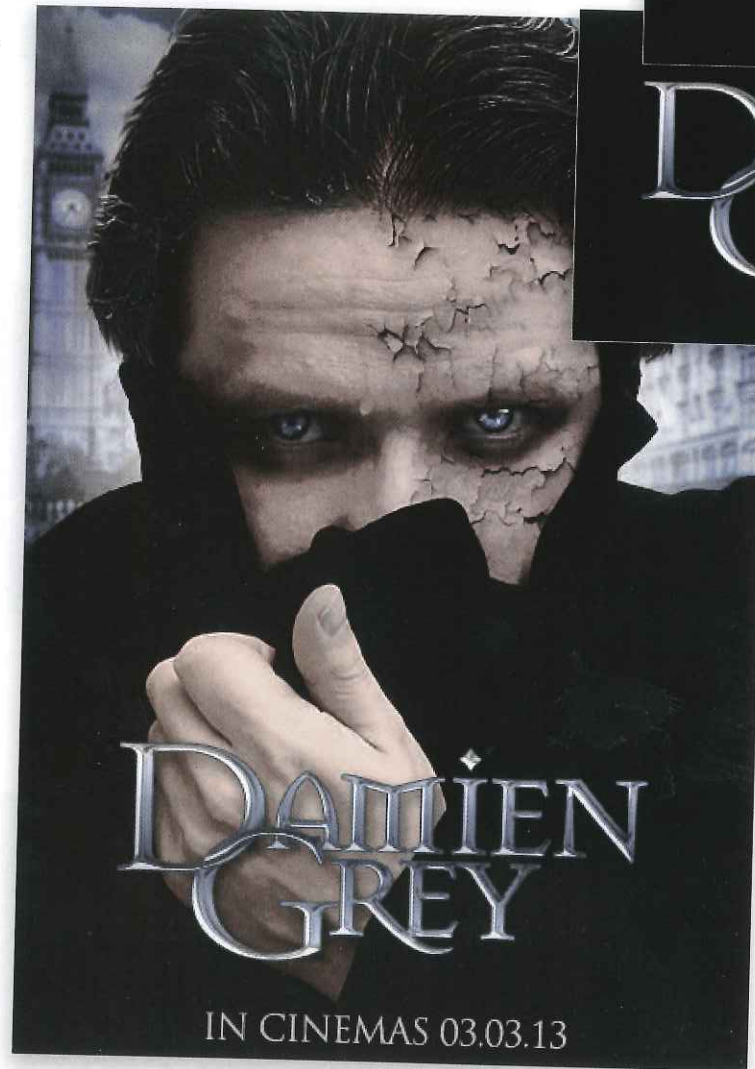
DOWN & DIRTY TRICKS >>

STEP NINE: Select all the characters on the right side of the letter "G" and enter "rey" (using Mason Regular as the font). Reposition the layer so that the letter "G" overlaps the letters "D" and "a" (see example).

STEP TEN: Click on the Add Layer Mask icon (circle in a square) at the bottom of the Layers panel. Press D then X to set the Foreground color to black. Choose the Brush tool (B) from the Toolbox. Using a small, hard-edged brush, paint away the portion of the "G" that overlaps the lower portion of the letter "D" to make it appear as if it's coming through the letter "D." ■



Final type effect



Type effect as it appeared in the June 2011 issue



Accurate color from display to print. ColorMunki Photo

A calibrated monitor and printer is the key to getting accurate color, the first time, every time. The X-Rite ColorMunki Photo is the simple all-in-one solution to ensure monitor to print matching – and it also calibrates digital projectors. Watch the new video to see how ColorMunki Photo can help during a portrait shoot to get the color right the first time – every time.



FREE ColorChecker
Camera Profiling Tools
with registration



Video at xritephoto.com/colormunkiphoto



xrite

xritephoto.com • 914 347 3300
Distributed by MAC Group