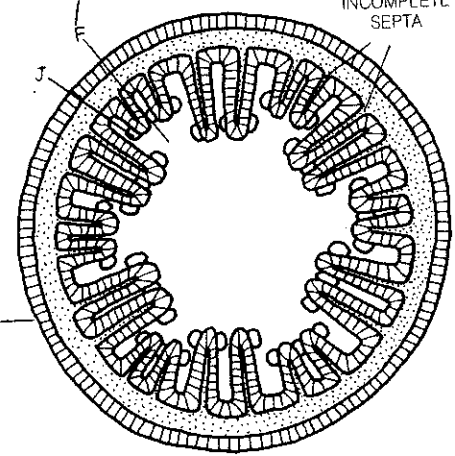
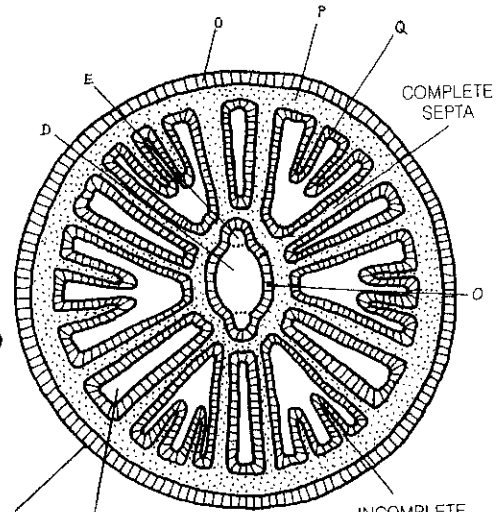
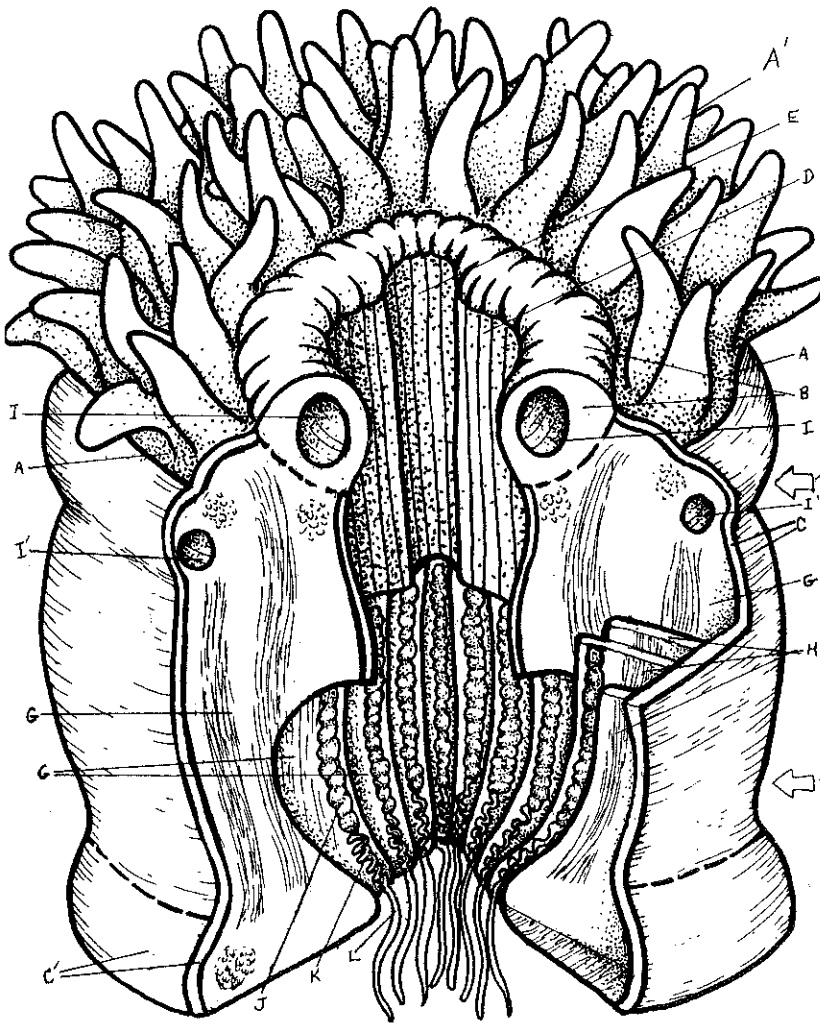


# SEA ANEMONE.



EPIDERMIS.  
MESOGLEA.  
GASTRODERMIS.

- ORAL DISC<sub>A</sub>
- TENTACLES<sub>A'</sub>
- MOUTH<sub>B</sub>
- OSTIUM<sub>C</sub>
- COLUMN<sub>C'</sub>
- PHARYNX<sub>D</sub>
- SIPHONOGLYPH<sub>E</sub>
- GASTROVASCULAR CAVITY<sub>F</sub>
- SEPTA<sub>G</sub>
- COMPLETE<sub>H</sub>
- INCOMPLETE<sub>I</sub>
- OSTIUM<sub>J</sub>
- GONADS<sub>K</sub>
- SEPTAL FILAMENTS<sub>L</sub>
- ACONTIA<sub>M</sub>
- PEDAL DISC<sub>N</sub>

- MUSCLES<sub>M</sub>
- CIRCULAR<sub>N</sub>
- LONGITUDINAL<sub>O</sub>

