

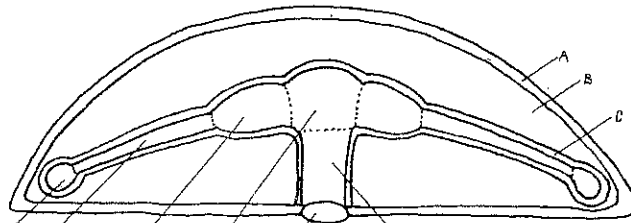
# COMMON JELLYFISH (AURELIA).

## BODY PLAN\*

EPIDERMIS<sub>A</sub>

MESOGLEA<sub>B</sub>

GASTRODERMIS<sub>C</sub>

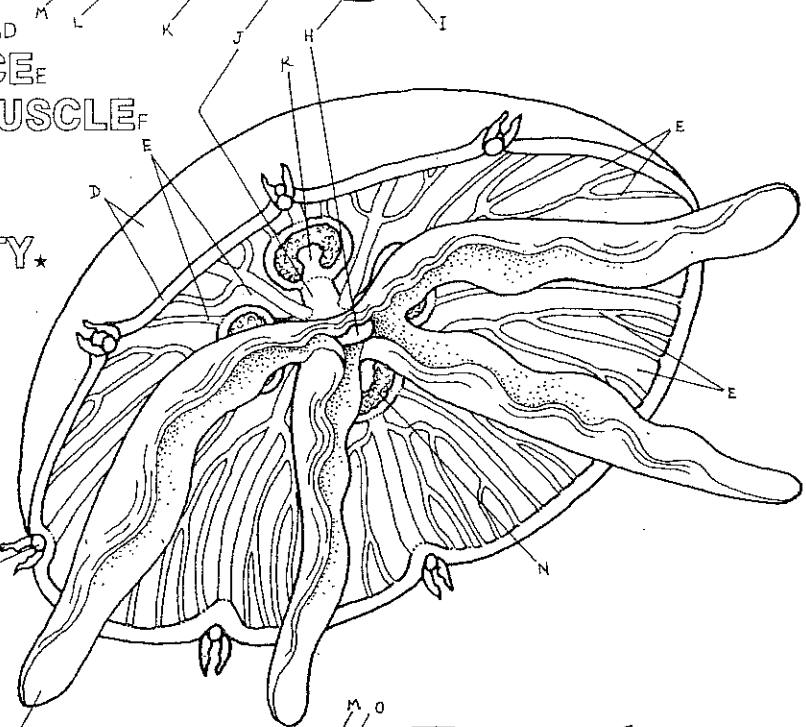


EXUMBRELLAR SURFACE<sub>D</sub>

SUBUMBRELLAR SURFACE<sub>E</sub>

NERVE NET/CIRCULAR MUSCLE<sub>F</sub>

ORAL ARMS<sub>G</sub>



## GASTROVASCULAR CAVITY\*

MOUTH<sub>H</sub>

GULLET<sub>I</sub>

STOMACH<sub>J</sub>

GASTRIC POUCH<sub>K</sub>

RADIAL CANAL<sub>L</sub>

RING CANAL<sub>M</sub>

## GONADS<sub>N</sub>

## SENSORY RECEPTORS\*

RHOPALIUM<sub>O</sub>

LAPPET<sub>P</sub>

