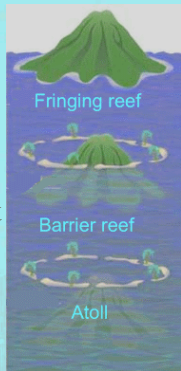
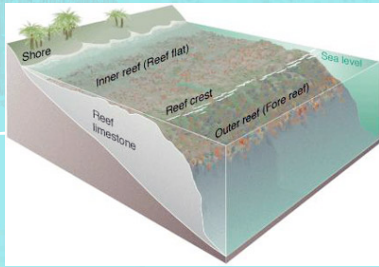


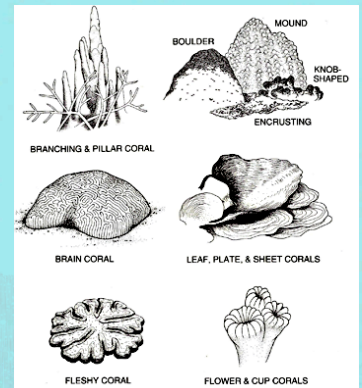
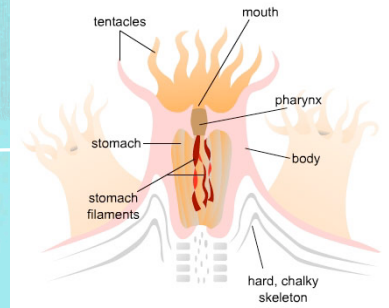
* Corals - not found in Oregon

- * need warm, clean tropical water
- * form symbiosis with Zooxanthelle Algae - give corals sugars
- * Form massive Calcium Carbonate Skeleton
- * more species in the coral reef than in the rainforest
- HUGE part of marine food webs**
- * **Highly endangered**

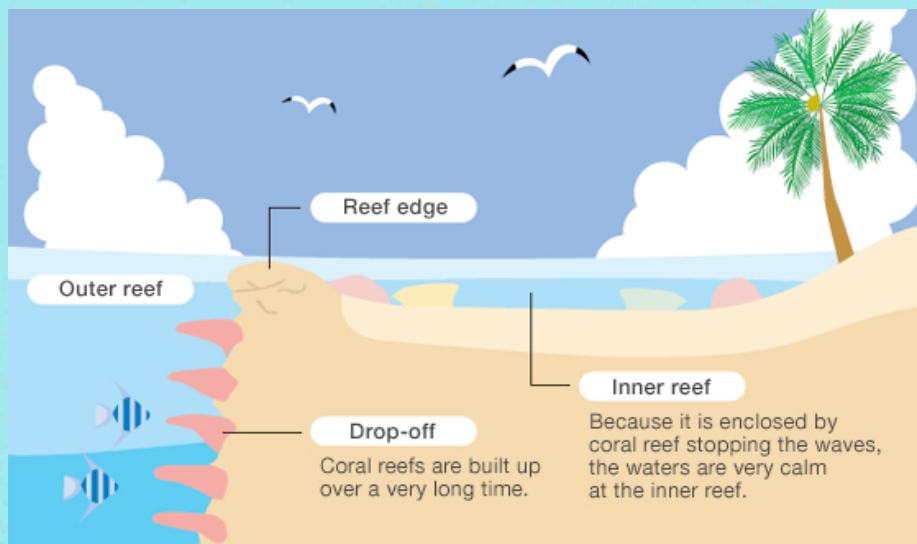


Coral Facts -

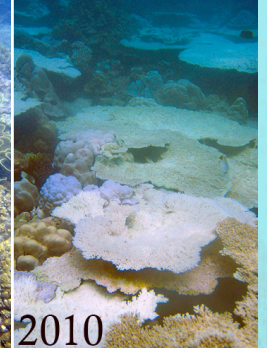
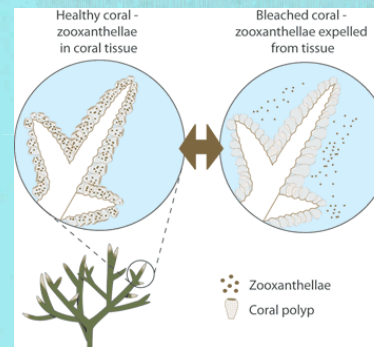
- * It takes one Coral larvae to form a reef
- * Coral grows at the rate of 15cm a year
- * Coral can be 1000s of years old
- * Millions and Millions of coral polyps can make up one reef
- * 98% of the food consumed by corals comes from their algae
- * Coral Reefs are connected through living tissue found below the gut - corals can stretch for many miles



Basic Reef Structure

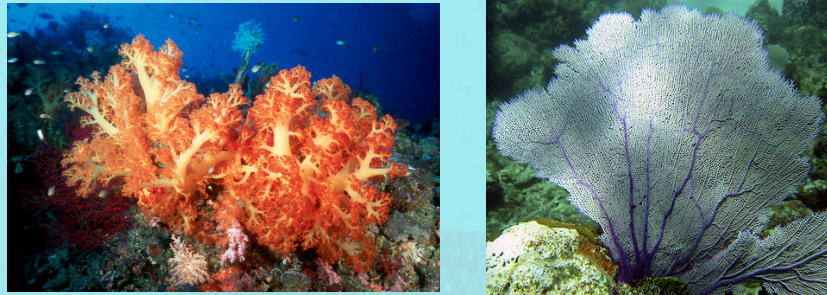
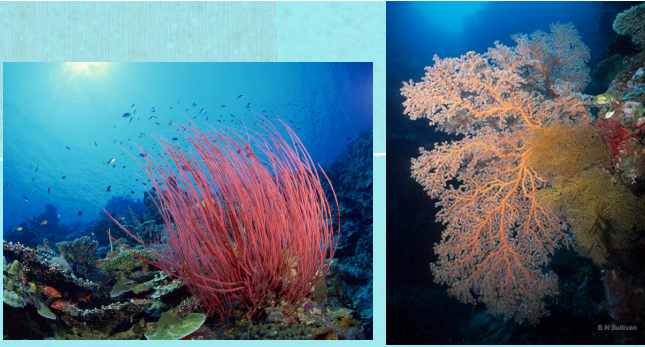


Coral Bleaching



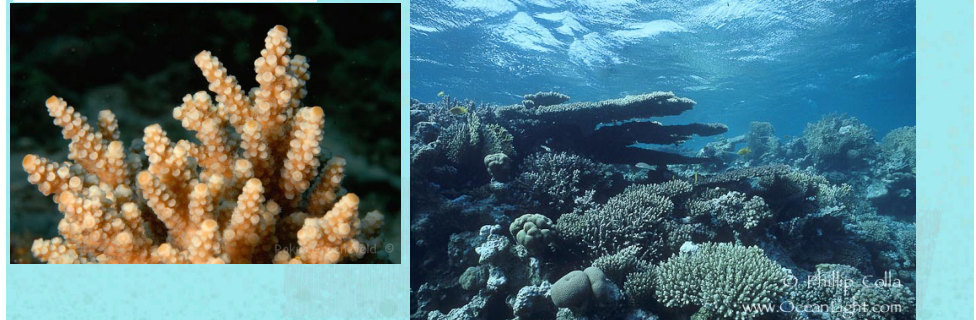
* **Corals - Subclass
Octocorallia**

- * Sea Whips
- * Soft Corals
- * Sea Fans



* **Corals - Subclass
Hexacorallia**

- * **Hard, Stony Corals**



Oregon Species - need to know

- * **Sea Pen**
- * **Sailor by the Wind**
- * **Moon Jelly**
- * **Lion's Mane**
- * **Sea Nettle**
- * **Giant Green Anemone**
- * **Aggregating Anemone**



Phylum Ctenophora

Phylum Ctenophora

* Basic Characteristics:

- * 50 species - all Marine and mostly Planktonic
- * only a few cm long
- * prey on zooplankton
- * Refract and retract light - combines with bacteria to create amazing light patterns
- * have bands of cilia called “Ctenes” that beat to produce wave like movements
- * All but one species lack Nematocysts (former members of Phylum Cnidaria)



Comb Jellies and Sea Gooseberrys

