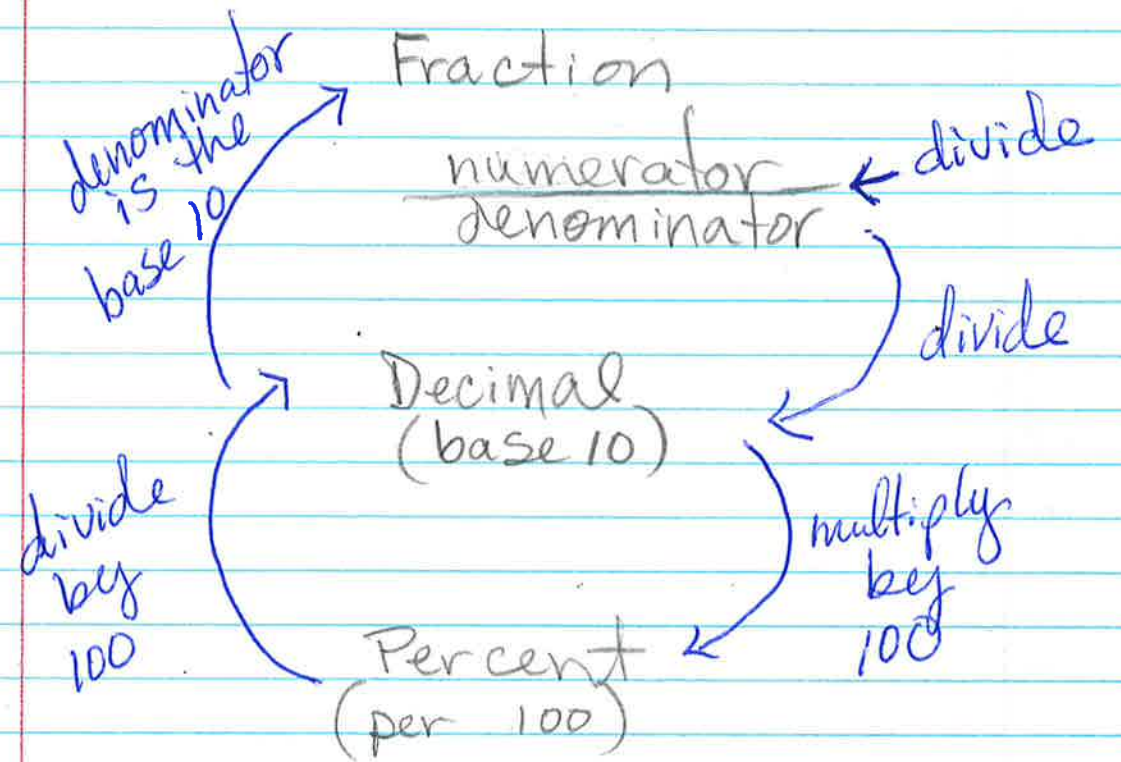
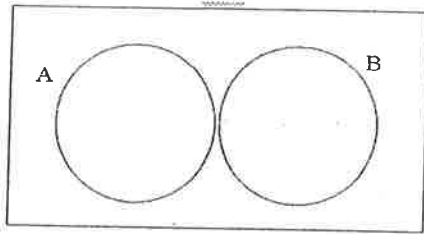


Fractions, Decimal, Percents



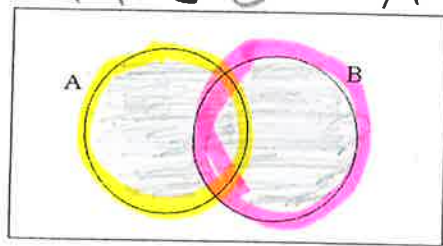
VENN DIAGRAMS



Disjoint:

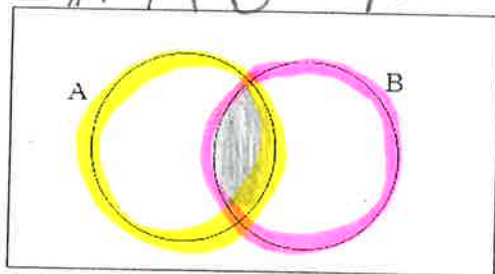
- No overlap
- A & B do not share any elements.

$A \cup B$ "A union B"



A or B or both

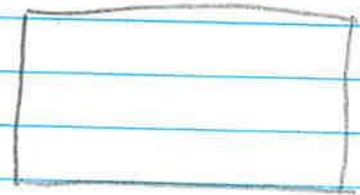
$A \cap B$ "A intersects B"



A and B
(both)

Universal Set:

- whatever is within the rectangle
- contains the elements of the Sample Space.



Sample Space (S)

- all possible outcomes or elements within a set.

Example: Disjoint

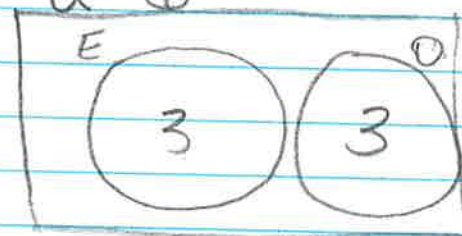
6-sided die

$$S = \{1, 2, 3, 4, 5, 6\}$$

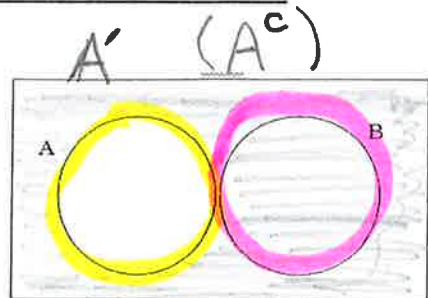
$$E = \{\text{even numbers}\}$$

$$O = \{\text{odd numbers}\}$$

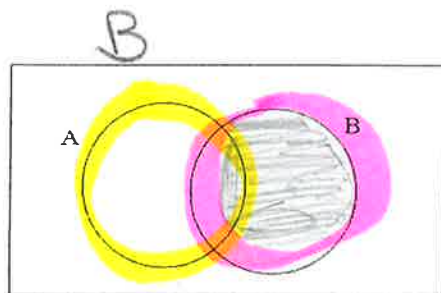
$$U = 6$$



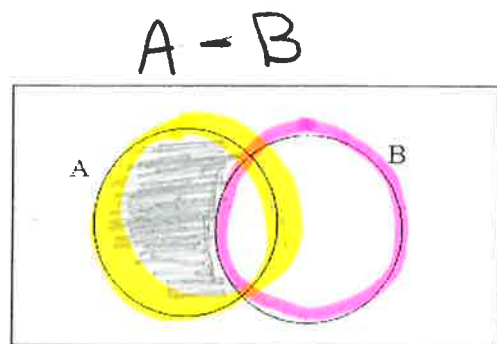
VENN DIAGRAMS



Complement
- Not A



All of B



Only A