



Photo by Mrs. Loo

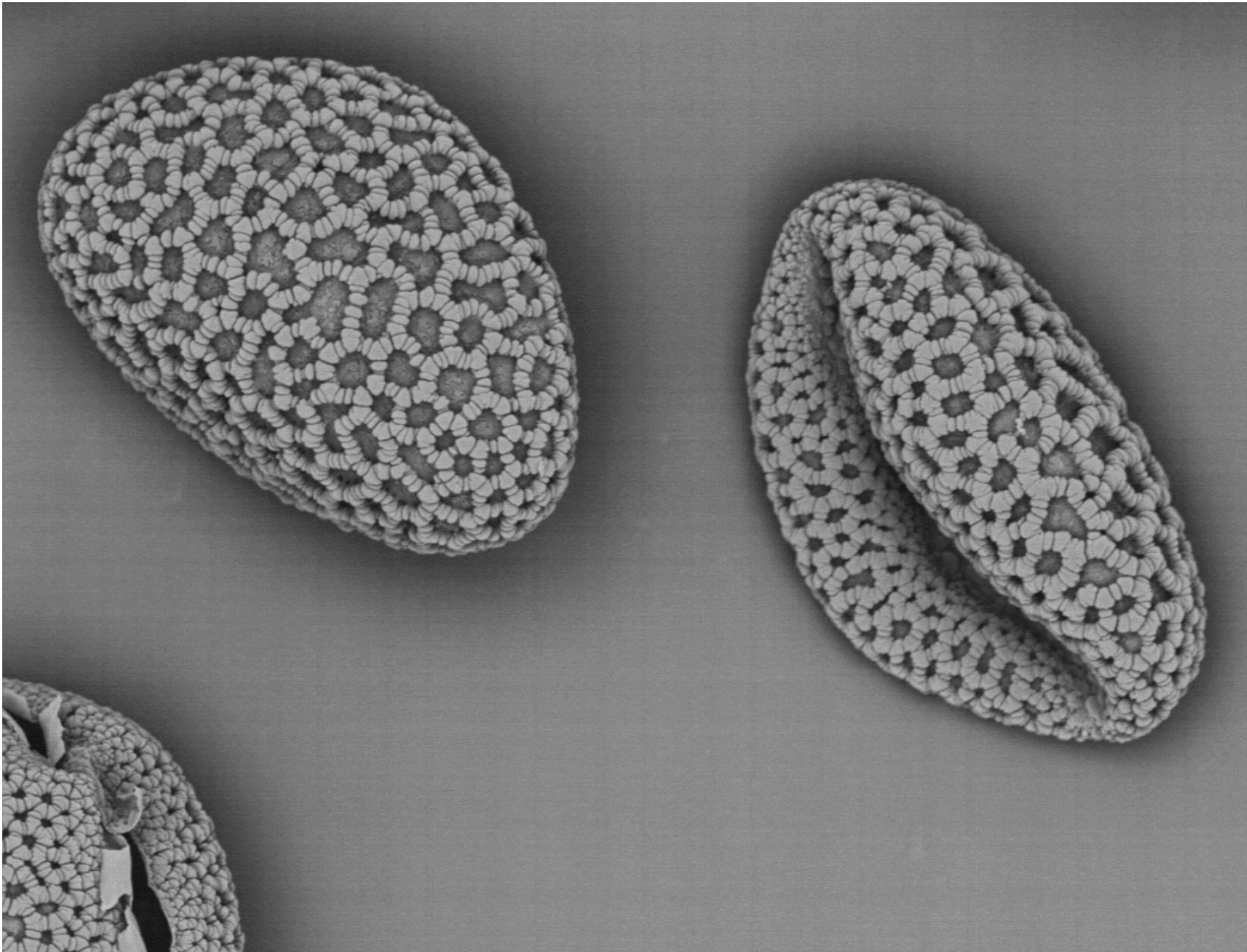


100x



400x

Lily (*Allostromeria*) Pollen

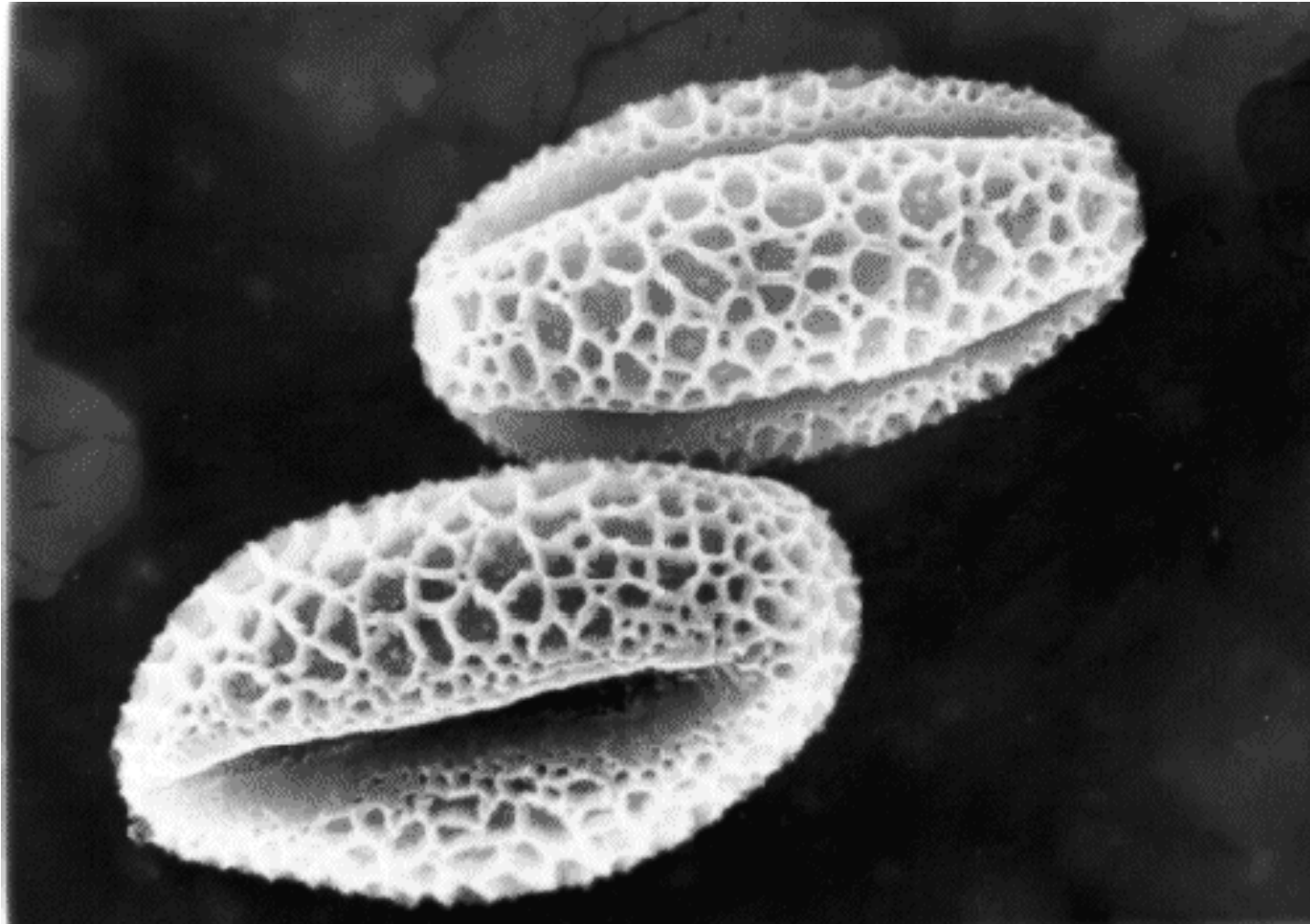


20 μ m

03LiliaceaePollen

1/11/0 REMF

Lily Pollen SEM - <http://remf.dartmouth.edu/images/botanicalPollenSEM/source/3.html>

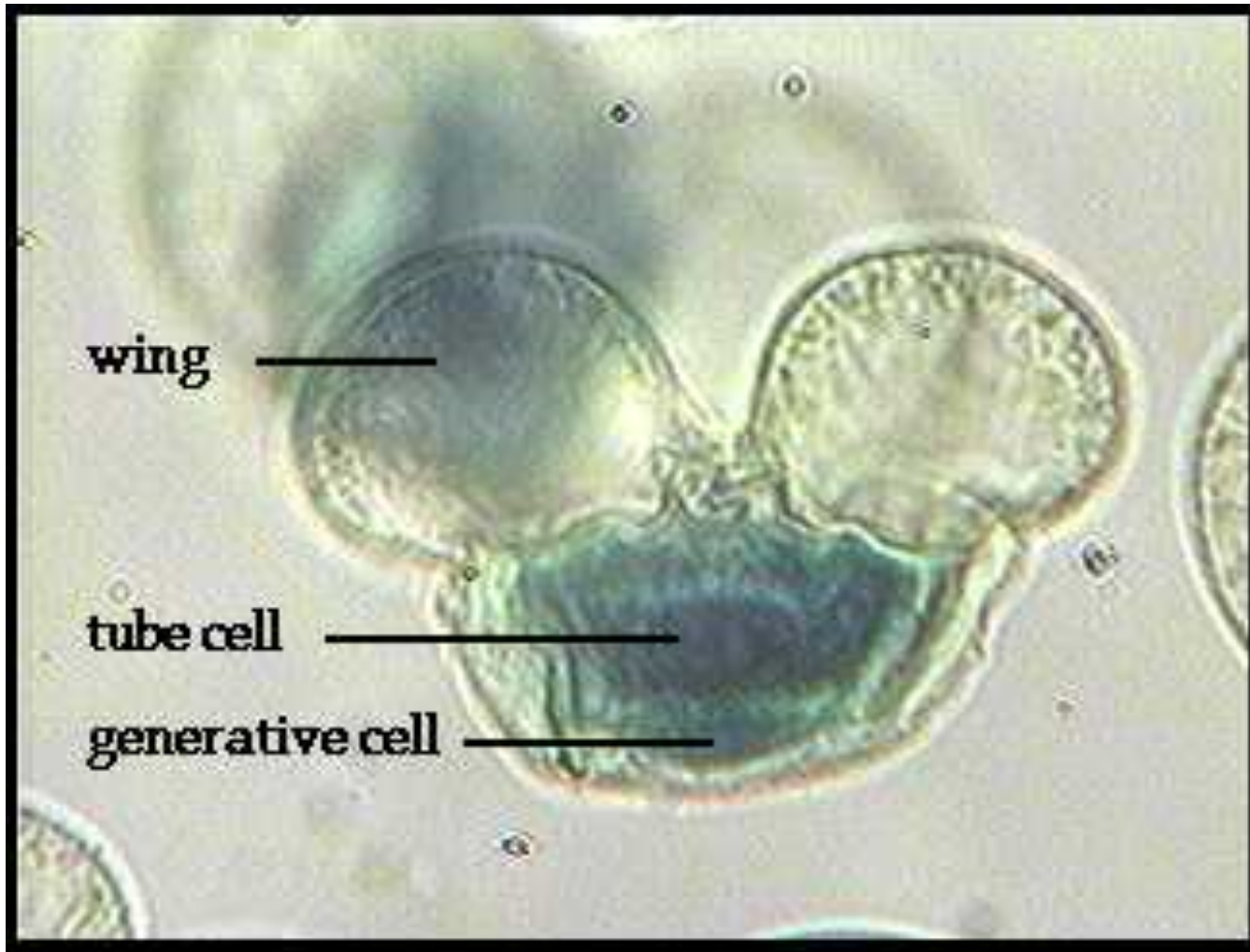


Willow Pollen – SEM

<http://www.bot.nhmus.hu/hnpalps.gif>

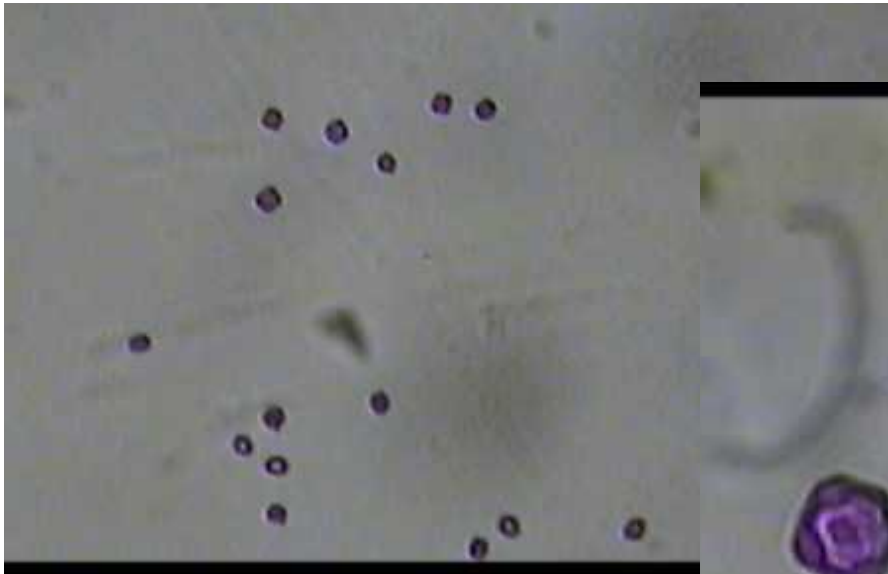


Pine Pollen 400x

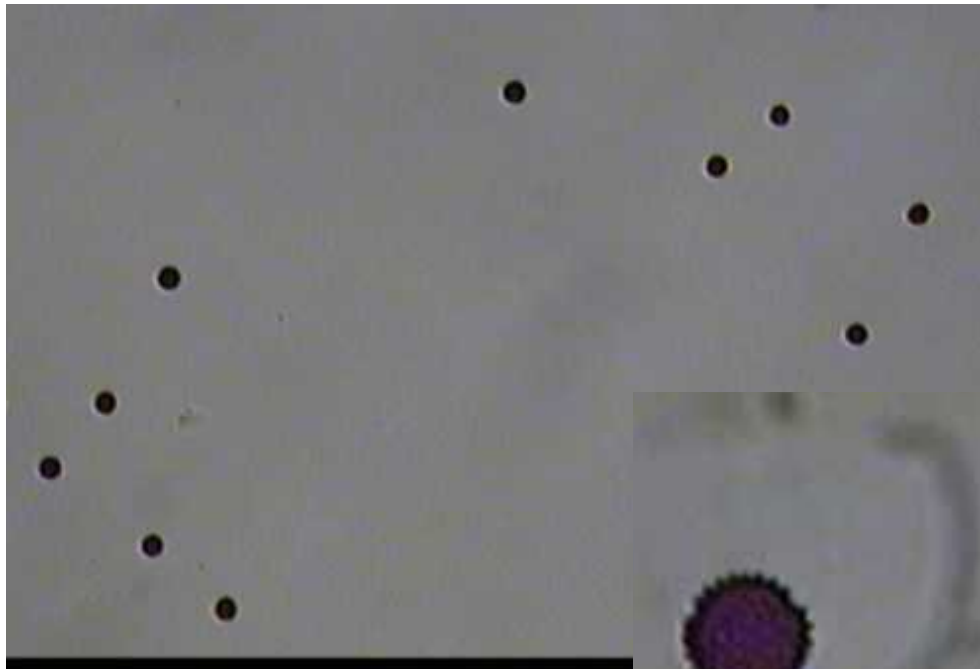


Pine Pollen

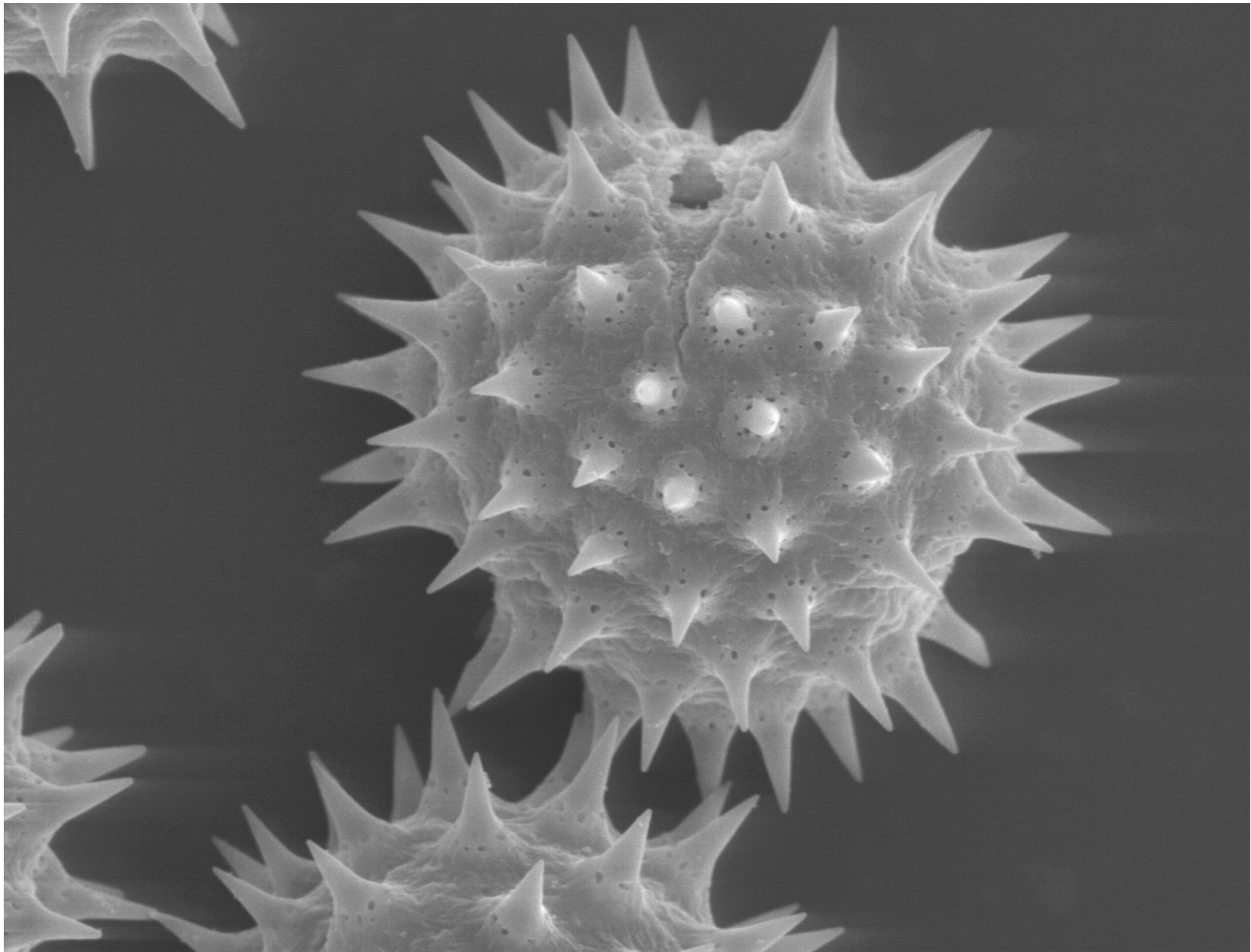
<http://www.uleth.ca/bio/bio1020/images/pin2b7.jpg>



Alder Pollen 100x and 400x



Ragweed Pollen
100x and 400x



10 μ m

11 Asteraceae (Helianthus) Pollen

1/11/0 REMF

Sunflower pollen SEM - <http://remf.dartmouth.edu/images/botanicalPollenSEM/source/11.html>



Trout Lily ovary & ovules

http://www.flickr.com/photos/ontario_wanderer/2439202538/sizes/m/in/photostream/