



Managing the Dock using dockutil and ARD

Notes

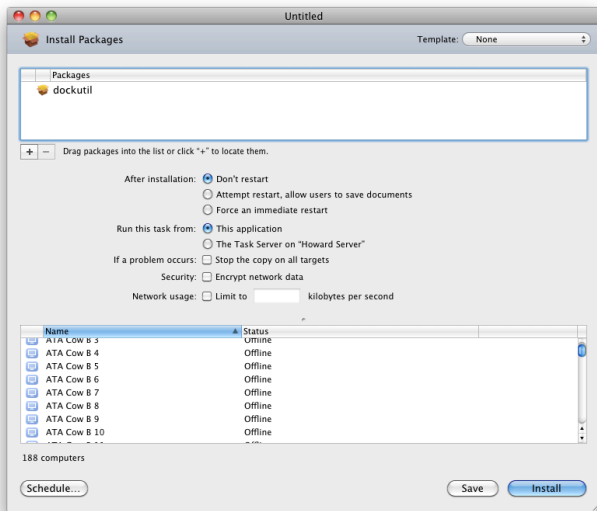
Dockutil is a free, open-source program that makes it simple to modify the Dock on a number of Mac OS X computers, even if Parental Controls are enabled. There is no official install package for dockutil so I created my own for these instructions. To see the official dockutil website please visit this address: <http://code.google.com/p/dockutil>

Install Option 1: Include dockutil in your original image

1. Turn on the computer that will be used as your master image.
2. Download **dockutil** at <http://tinyurl.com/dockutilpkg>
3. Unzip the **dockutil.pkg.zip** file
4. Run the **dockutil** installer.
5. Finish imaging. Dockutil is ready and waiting just in case!

Install Option 2: Add Dockutil After Imaging

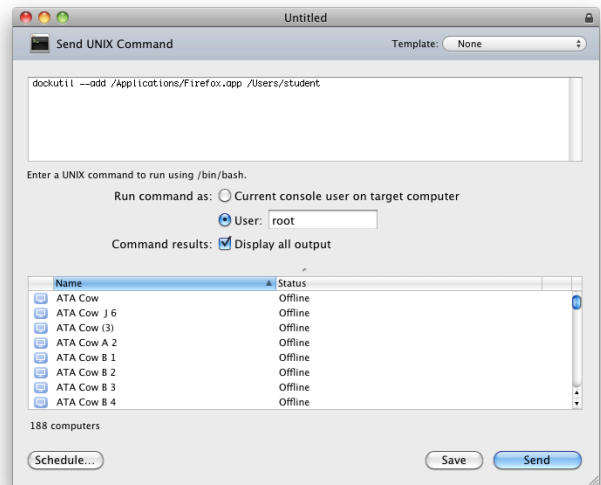
1. On a computer with ARD installed, download **dockutil** at <http://tinyurl.com/dockutilpkg>
2. Unzip the **dockutil.pkg.zip** file
3. Open **Apple Remote Desktop** and select all computers that need to have **dockutil** installed.
4. Click the **Install** button in the ARD toolbar.
5. Click the **+** (plus) button and add the **dockutil.pkg** package.



6. Select the option to install via **task server**.
7. Click the **Install** button.
8. Turn computers on and sign them into the network as needed, or be patient and wait for students to log them in.

Using dockutil

1. Open **Apple Remote Desktop**.
2. Select a group of computers that needs its Dock edited.
3. Click on the **UNIX** button in the Remote Desktop toolbar.
4. Type a command to send. (See examples below.)
5. Run command as user: **root**
6. Click the **Send** button.
7. It should succeed on all. If some are not on, or not signed into the network, re-connect them and repeat these steps.



Example Commands for Dockutil

Important: If the path includes a space, put a backslash before the space. For more info and examples just type `dockutil -h` in the Terminal and press Return.

- Add Firefox for user "student"


```
dockutil --add /Applications/Firefox.app /Users/student
```
- Add Address Book for all users (note the required backslash)


```
dockutil --add /Applications/Address\ Book.app --allhomes
```
- Remove Firefox for user "student"


```
dockutil --remove 'Firefox' /Users/student
```
- Remove Firefox for all users


```
dockutil --remove 'Firefox' --allhomes
```
- Add Documents folder for user "student"


```
dockutil --add '~/Documents' /Users/student
```
- Add Documents folder for all users


```
dockutil --add '~/Documents' --allhomes
```
- Remove Documents folder for user "student"


```
dockutil --remove 'Documents' /Users/student
```
- Remove Documents folder for all users


```
dockutil --remove 'Documents' --allhomes
```
- Add Firefox for all users, immediately after Safari


```
dockutil --add 'Firefox' --after 'Safari' --allhomes
```
- Add a link to files1 for all users


```
dockutil --add afp://files1.4j.lane.edu --allhomes
```