



# Reflector: Wirelessly mirror your iPad to any Mac or PC.

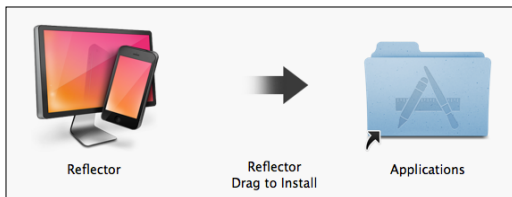
## How it Works

Reflector is a paid application for your **Computer** that allows you to wirelessly show your iPad screen on your computer.

This means that with a projector connected to your laptop, you can project your **iPad** through your **computer** to model new tools for students.

## Setting Up

1. First you will need to purchase and download the **Reflector Application** from:  
<http://www.airsquirrels.com/reflector/>
2. Next, install **Reflector** in your applications folder.



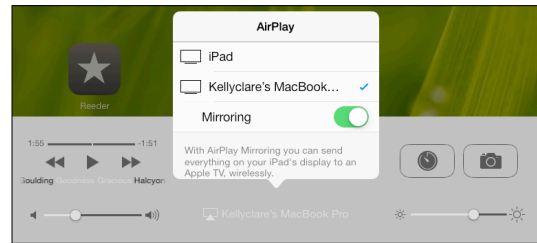
Delete the original installer once you have installed Reflector in applications to ensure you are using the application that is saved on your computer.

## Connecting to your Device

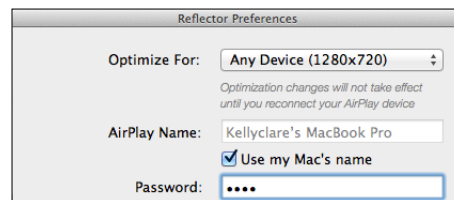
1. Connect your **Laptop** and **iPad** to the Wireless.  
Tip: Both need to be connected to the **same network** to be able to see each other and connect.
2. Open **Reflector** from your applications folder on your **computer**.
3. Open **AirPlay** on your iPad:  
**iOS 6:** Double Tap Home Button (Quickly)  
Swipe bottom toolbar from Left to Right



**iOS 7:** Open **AirPlay** by **Swiping Up** from the bottom of your iPad (Near the home button).



4. Tap the **AirPlay** icon.  
Check that your iPad is on the same Wireless as your computer if AirPlay Button does not appear.
5. Select the name of the **Computer** to connect iPad to and tap slider button below computer's name to **turn on Mirroring** (Color showing means ON)
6. If you have set up a **Passcode** to prevent students and teachers from accidentally connecting to you, type that in to connect. If you have forgotten what the code was, you can reset it from your **computer**, in the **Reflector Application** in **Preferences**.



7. Press **Home Button** to return to **home screen** and begin using apps as usual. Your **iPad** applications and sounds should be coming through your laptop.

## Disconnecting From AirPlay

1. To disconnect your iPad from your computer screen, open **AirPlay** on your **iPad**:  
**iOS 6:** Double Tap home button and **Swipe** to the **Right**.  
**iOS 7:** **Swipe upward** from bottom of iPad screen
2. Select **iPad** from **AirPlay** list. Your computer screen will return to normal and all apps and sounds will again play through your iPad.